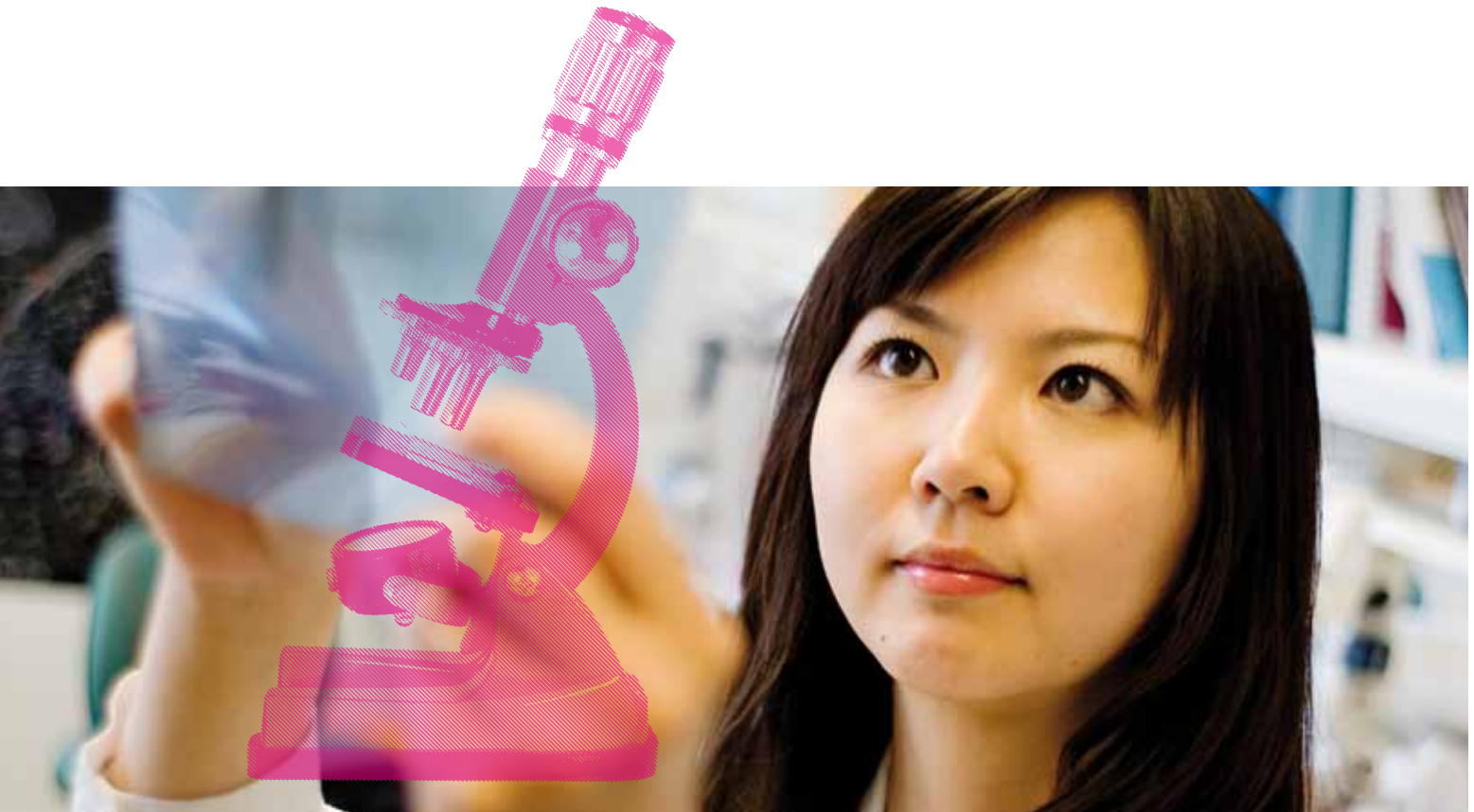


Global Master's Programme in

# Biomedicine

2 years, 120 credits



Karolinska Institutet is one of the world's leading medical universities. Its mission is to contribute to the improvement of human health through research and education.



**Karolinska  
Institutet**

The advanced study of biomedicine will further your knowledge in the broad and expanding biomedical and molecular medicine field. The overall aim is to contribute to improving human health.

### For whom?

The programme develops a strong foundation for independent work that obtains and uses new knowledge in molecular medicine, which can be used to embark on a research career, or as the basis for jobs where in-depth knowledge in biomedicine is a prerequisite, e.g. in the pharmaceutical industry, regulatory authorities or science journalism.

### Amidst world leading research

Students are trained to address questions on mechanisms and therapeutic strategies, and develop an understanding of leading methodologies for studying common diseases, including infections, cancer, and metabolic and neurological disorders. The programme is developed by experienced scientists, and is based on work conducted in research laboratories at Karolinska Institutet, one of the world's foremost universities in the biomedical field.

The programme focuses on primary biological knowledge and its use to drive medical developments. The first section of the programme presents a general, advanced biomedical base. Following this, students may then opt to pursue one of Karolinska Institutet's programme areas for research, by taking elective courses and conducting independent projects.

## Why study Biomedicine at Karolinska Institutet?

- The programme is a highway to a career in biomedical science.
- The education programme is integrated with Karolinska Institutet's world-leading research.
- Like Karolinska Institutet, the programme takes a translational approach, with close collaboration between clinic and advanced research.
- You'll have opportunities for broadening your knowledge and forging valuable contacts for a possible future PhD by several independent projects in different laboratories.



**Si Chen**  
biomedicine student

'If you do not speak Swedish and would like to come to Sweden, don't worry. Basically everyone here speaks English, and that almost perfectly. Even many people, who you don't expect to be able to speak English, do.'



**Karthik Maddi**  
biomedicine student

'Karolinska Institutet was my first choice based on their research profile and education system. This is what it feels to me when I have actually arrived here and looked around campus... awesome.'

Read more at [ki.se/studentblogs](https://ki.se/studentblogs)

## Specific entry requirements

- A bachelor's degree or a professional degree equivalent to a Swedish bachelor's degree of at least 180 credits in biomedicine, biotechnology, cellular and molecular biology or medicine.
- Proficiency in the English language (equivalent to English B at Swedish upper secondary school) should be documented by an internationally recognised test such as TOEFL, IELTS, or the equivalent.

### Applicants from China

Applicants need a 4-year bachelor's degree to meet the general requirement. Applicants must submit a bachelor degree certificate, a certificate of graduation, and transcripts (for each year of study). All documents should be in Chinese, and in officially certified translations.

### Applicants from India

Applicants with a degree in medicine, pharmacy, science, engineering, computer science, computer applications, or technology, are exempted from submitting an English language proficiency test. Please note that college-issued mark sheets/transcripts will not be accepted unless they are from an autonomous Indian college.

For further information about requirements and application procedures visit [ki.se/masterstudies](https://ki.se/masterstudies).

## Year 1

- Advanced preparatory course in biomedical research.
- Frontiers in translational medicine.
- Biomedical communication 1.
- Laboratory animal science.
- Biostatistics.
- Bioinformatics.
- Elective course or project.

## Year 2

- Elective concentration: Frontiers in biomedicine.
- Elective project.
- Biomedical communication 2 and 3.
- Degree project.



## Join the tradition of future breakthroughs

As you enter the campus of Karolinska Institutet, you are putting your feet on historic ground. Karolinska Institutet is a place of scientific breakthroughs and Nobel Prize winners, yet a dynamic institution setting itself up for the methodology needed for future success. Possibly with you as part of the team.

Originally created for training army field surgeons 200 years ago, Karolinska Institutet now serves as a first-class greenhouse for a new type of force, the brightest and most creative group of medical entrepreneurs, doctors and scientists around. A force to be reckoned with.

Since the beginning of the 1900s, Karolinska Institutet has been assigned to elect the recipients of the Nobel Prize in Physiology or Medicine. Even though this task is hugely important, electing new talent to train with us is equally thrilling. Honestly – it is the not-yet discovered solutions that make us tick, and we hope the same goes for you.

So, how does it sound to be present as the focus of medical research shifts from curing to preventing? From treatment to completely ending illness and disease? Our aim is to train students who are inquisitive. Because even though we recently celebrated our 200 year anniversary, the aim is at the centuries to come. Wellgrounded in a long tradition of scientific trail-blazing, Karolinska Institutet will always be about what you achieve tomorrow. Maybe this is why we rank among the best. The research landscape is being re-drawn. Wouldn't it be nice to hold the pen?



Photo: Markus Dagnell, Camilla Svensk, Erik Svensson and ©The Nobel Foundation. Subject to change.

## Facts on Karolinska Institutet

Located in Stockholm, Sweden

Departments: 22

Employees: 3 944

Research units: 597

Senior researchers: 1 509

Professors: 331 professors

Postgraduate students: 2 076

Undergraduate and master students (full time): 5 524

## Find us on the web

[ki.se/masterstudies](http://ki.se/masterstudies)

[ki.se/studentblogs](http://ki.se/studentblogs)

## Useful links

[www.sweden.se](http://www.sweden.se)

[www.scholarshipportal.eu](http://www.scholarshipportal.eu)

[www.swedenintouch.se](http://www.swedenintouch.se)

[www.studyinstockholm.se](http://www.studyinstockholm.se)

For further information visit [ki.se/masterstudies](http://ki.se/masterstudies)

Contact the Admissions Office at [admissions@ki.se](mailto:admissions@ki.se) if you have questions about entry requirements or application procedures.

For other queries related to studies at Karolinska Institutet, contact a study advisor at [study-guidance@ki.se](mailto:study-guidance@ki.se)



**Karolinska  
Institutet**